



Groundswell Newsletter –July 2009

Welcome to another *Swell-lines* newsletter showcasing recent events, developments and outcomes for Groundswell Design & Health Promotion.

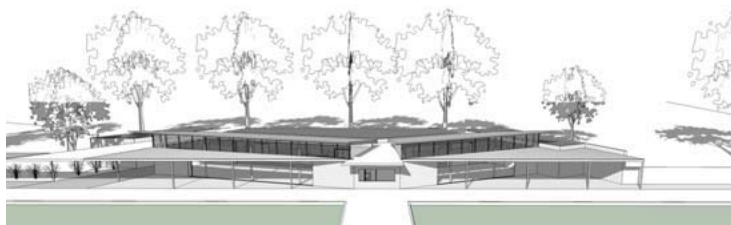
It has been a fantastic quarter for both design and health promotion outcomes including the ongoing success of the Child & Family Outreach Service with Glastonbury in Geelong, Camp Wilkin service and policy development completed, Murray to Moyne Bike Ride raising money for Cancer Research and Treatment, Enhancing Students Program, Anglesea Bowling Club, Victoria Police - High Challenge Program and many more graphic design jobs!

Child and Family Outreach Service – Glastonbury Child & Family Service Senior Project functions have continued during this quarter and have included completing a progress report for the Department of Health & Ageing in February and numerous service and policy developments for the team of 4 outreach clinicians operating in Geelong, Torquay & Colac. The agency and team are an outstanding example of professionals committed to enhancing the health and wellbeing of people affected by significant social issues like domestic violence & illicit drug abuse to cite but a few. Groundswell would also like to acknowledge Judy Wookey's contribution to Glastonbury as the CEO for many years and her tremendous contribution to the welfare sector and wish her all the best with her new ventures.

Groundswell has been engaged to project manage a special youth development camp in partnership with the Geelong Police Domestic Violence Committee & Glastonbury resulting from funding secured from the Geelong Foundation and other sources in July last year. The High Challenge Program is a youth development initiative developed and delivered by the Victorian Police since 1995. The 3 day camp will be held in Anglesea on the Surf Coast late in July 2009.

Anglesea Bowling Club – Community Participation Centre & Club House Capital Works Project 2009.

Groundswell is assisting the Anglesea Bowling Club with developing a proposal to build a 2 million dollar club house & community centre in Anglesea in 2010. The proposal has received significant support from the local community, Surf Coast Shire and with funding from State & Federal government could be up and running in late 2010!



Call: (03) 52631190 Visit: www.groundswelldesign.com.au

Enhancing Students Potential Program (ESP) – Geelong High

It is with much pleasure that Groundswell reports on a new initiative focusing on enhancing student retention and participation in school, developing a delivering an 8 week youth development program in partnership with Boiled Frog Adventures, Geelong High, Camp Wilkin, Anglesea Recreation Camp and other regional services.

The year 7 students participated in reward based adventure activities like- surfing, high ropes, climbing and mountain bike riding and is integrated with health and education sessions on self confidence, addressing bullying, positive behaviours and self efficacy / goal setting. Thanks must go to Geelong High and Boiled Frog Adventures for truly having a positive impact on school participation and retention – a great early intervention program is ESP!



Enhancing Students Potential

Groundswell has continued with a number of Graphic Design Projects this quarter and includes – Mad Milers Newsletter, Roof Revival Service Identity & Publications, Halls Gap Convention Centre, Website Designs and Flyer Designs for local businesses and regional service providers to name but a few.

Sustainable Gardening Project – Barwon South West Region

Groundswell is also undertaking an action based research project of the sustainable gardens projects operating in Colac, Bannockburn and Portarlington. This project is community focused and sustainable ensuring local communities have access to fresh organic produce and local education, a project which Groundswell is proud to be part of.

As there has been much energy given to economic issues resulting from the Global Economic Crisis it is encouraging to be part of addressing environmental and social issues in our region.

Horizons – More community development, student at risk programs and community building initiatives' next quarter!



For more information or assistance please call us @ Swell on: 03 52631190 or check out the website on: groundswelldesign.com.au



Kind Regards Paul Weight